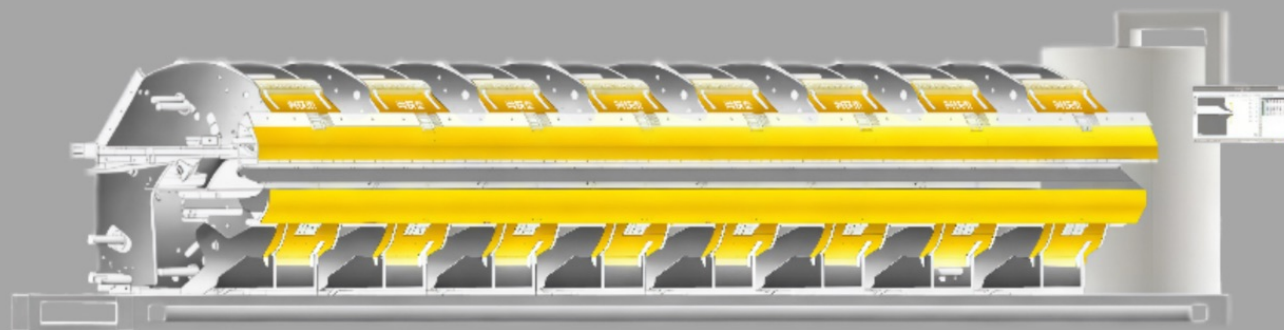


SYNCHRONIZED POWER CONTROL AXES

- Synchronized power axes ensure the levelness of the folding slider and clamping slider, which is critical for extending the machine's service life.
- They eliminate force inconsistencies from hydraulic cylinders, preventing twisted workpieces after folding.
- They also boost the folding machine's speed.

AUTOMATION

- Integrated automatic loading system (industry-standard): Sheet metal is quickly and flexibly fed into the folder via linear guides and vacuum suction cups, automatically settling at the loading position.
- Automatic panel flipping device: Flips workpieces with edge-holding at both ends, or grips the other side of the workpiece.



ULTRA-STABLE C-TYPE FRAME

- Zero-position locked toggle mechanical structure: Ensures the clamping die securely holds the sheet metal.
- Prevents over-pressing of the upper die.

INTUITIVE HMI

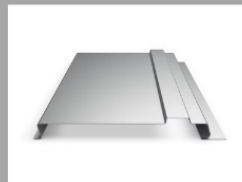
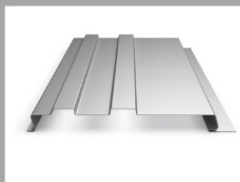
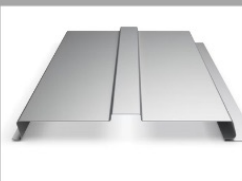
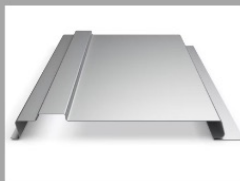
- Controls 10 axes and manages parameters: Sheet type, thickness, unfolded size, back gauge position, bending angle, clamping die opening height, angle calibration, data logging, and clamping force.
- Touchscreen graphical programming and automatic bending sequencing.
- Bending interference simulation.

UNIQUE WORKSHOP

- Folding blade with 10mm carrier blade 35° upper tooling and lower tooling
- 15° folding beam recess.



T/L	4200	6400	8200	10000	12200
1.0 mm					
1.25 mm					
1.5 mm					
2.0 mm					
3.0 mm					
OPTIONS	Automatic Side Sheet Loading				
	Automatic Part Flipper				
	Electric Slitter				
	Vertical Hemming Device				
	Vacuum Gripper				



CONTACT US



info@artitectmachinery.com

www.artitectmachinery.com

Haian, Nantong, Jiangsu, China

ARTITECT DOUBLE FOLDER

TAKE CONSTRUCTION INDUSTRY
ONE STEP CLOSER TO
AUTOMATION

ARTITECT MACHINERY